



## CAPABILITIES

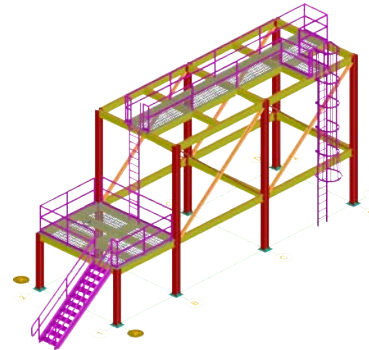
- Intelligent 3D Steel Design
- 3D Member Modeling
- 3D Plate Modeling
- Stairs, Ladders, and Hand Rail Arrangements
- Decking and Grating Modeling
- International Steel Libraries
- Bills of Material
- 2D Output Linked to 3D Model

## CADWORX® STRUCTURE

Intergraph CADWorx Structure includes the critical tools for effective structural design. CADWorx Structure is easy to learn and has reduced the man hours needed to create a structural design as compared to CADWorx Steel by over 50%. Create revenue-earning deliverables quicker and more accurately.

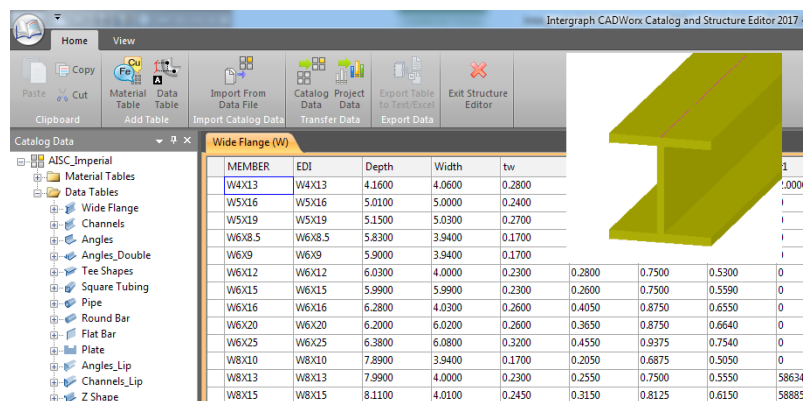
### QUICK, TIME-SAVING 3D MODELING

Create fully intelligent, 3D structural models with the unparalleled flexibility and collaboration of an AutoCAD®-based system. Choose your shapes or assemblies from our diverse library and utilize grid systems to accurately build your structures.



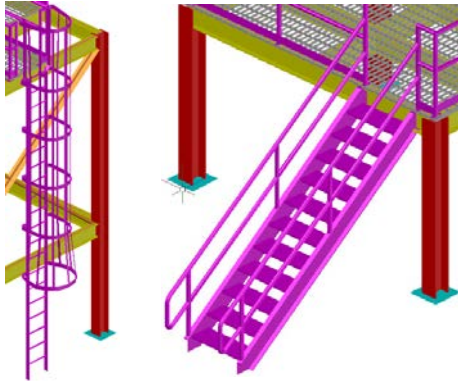
### COMPREHENSIVE STEEL SHAPE CATALOGS

International catalogs of steel shape libraries in both imperial and metric units are included with CADWorx Structure, providing the necessary steel shapes for accurately representing steel members in your 3D model. Historical and new country specific steel manuals can be added quickly when your company enters new markets.



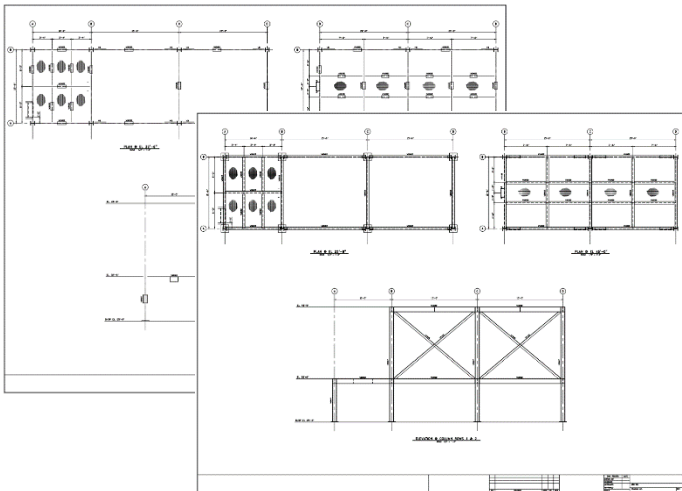
## EASY-TO-PLACE ASSEMBLIES

Some of the more detailed work in a structure includes adding secondary steel for access control, and CADWorx Structure provides commands for effortless modeling of these objects. Whether your project includes industry standards or your company has developed their own standard, CADWorx Structure allows the designer to replicate the necessary arrangement of these traffic items. Many customization options are built-in so that these assembly objects can reflect the scenarios encountered in industrial applications. Grating and decking can be rendered to show accurate portrayals of these objects in your 3D model.



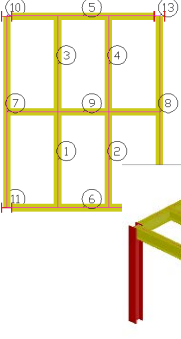
## DRAWINGS

Designers and engineers are able to easily create 2D drawings of their 3D models with AutoCAD dimensioning and annotations. Typical general arrangement drawings include single line steel and 2D representations that support multiple views.



## BILLS OF MATERIAL

Users can create accurate, user-configurable bills of material in the most popular database formats for all of your steel materials in the 3D model. These reports can be used to show total lengths and weights for each size, cut lengths, and selected object lengths and weights.



MARK	QTY	LONG_ANNOTATION	LENGTH	WEIGHT
1	1	W10X22	6'-3"	137.50
2	1	W10X22	6'-3"	137.50
3	1	W10X22	6'-3"	137.50
4	1	W10X22	6'-3"	137.50
5	1	W10X22	9'-3"	220.00
6	1	W10X22	9'-3"	220.00
7	1	W10X22	9'-3"	220.00
8	1	W10X22	9'-3"	220.00
9	1	W12X14	12'-6"	275.00
10	1	WBX67	7'-6"	502.50

MARK	QTY	LONG_ANNOTATION	LENGTH	WEIGHT
1	1	W10X22	9'-3"	220.00
2	1	W10X22	9'-3"	220.00
3	2	W10X22	12'-6"	275.00
4	5	W10X22	12'-6"	275.00
5	4	W10X22	12'-6"	275.00
6	5	WBX28	6'-3"	175.00
7	6	WBX28	6'-3"	175.00
8	7	WBX28	6'-3"	175.00
9	8	WBX28	6'-3"	175.00
10	9	WBX28	10'-0"	280.00
11	10	WBX67	7'-6"	502.50
12	11	WBX67	7'-6"	502.50
13	12	WBX67	7'-6"	502.50
14	13	WBX67	7'-6"	502.50

## TECHNICAL SPECIFICATIONS

- AutoCAD-compatible
- Microsoft® Windows® compatible

## APPLICATION AREAS

Process and Plant Design, Piping, Equipment, Steelwork, Petrochemical, Chemical, Power, Offshore, Food, Beverage, Brewing, Pharmaceutical, Water Treatment, Building Services, Shipbuilding and Architectural

## ABOUT INTERGRAPH PROCESS, POWER & MARINE

Soon to be known as Hexagon Process, Power & Marine, Intergraph Process, Power & Marine is the leading global provider of engineering software for the design, construction and operation of plants, ships and offshore facilities.

Hexagon Process, Power & Marine is part of Hexagon (Nasdaq Stockholm: HEXA B; hexagon.com), a leading global provider of information technologies that drive quality and productivity improvements across geospatial and industrial enterprise applications.

