

HxGN SMART Build


CLARITY. CONNECTIVITY. SIMPLICITY.
FROM THE GROUND UP.



THE CHALLENGE OF BUILDING SMART

YOUR CONSTRUCTION AND INFRASTRUCTURE

PROJECTS ARE AMONG THE MOST COMPLEX UNDERTAKINGS TO PLAN, COORDINATE AND EXECUTE. THE LARGEST OF YOUR PROJECTS CAN REQUIRE YEARS OF PLANNING AND EXECUTION, INVOLVE THOUSANDS OF PEOPLE AND TASKS, AND MILLIONS IF NOT BILLIONS OF DOLLARS OF INVESTMENT. REGARDLESS OF SIZE, YOUR PROJECTS ARE VERY OFTEN SUBJECT TO DELAYS AND COST OVERRUNS THAT ERODE PROFITABILITY.



Each project demands a high level of orchestration, beginning with design and modelling, preparing the construction plan, budgeting, communicating detailed instructions, tracking variances and changes and ultimately handing over an as-built digital asset.

While construction companies are accelerating adoption of information technologies to help manage the complexity, many of these efforts have proven to be costly, complicated and more disruptive than helpful.

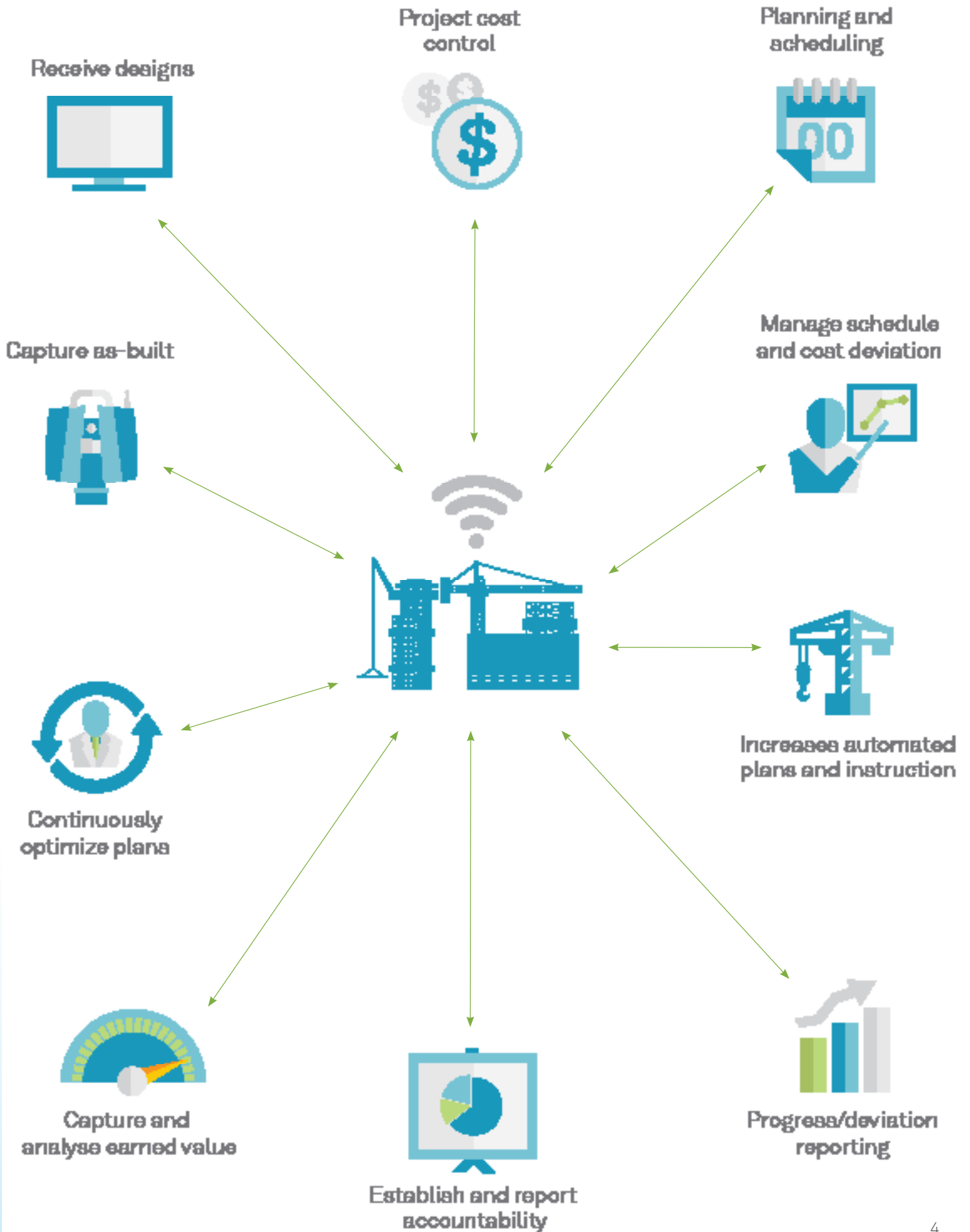
The pressing need is for a construction enterprise solution that functions from the ground up, providing top-down visibility while seamlessly connecting management and field professionals.



BUILT FOR THE CONSTRUCTION INDUSTRY FROM THE GROUND UP

HxGN SMART Build leverages decades of Hexagon project planning and control leadership used with some of the world's largest and most challenging industrial projects. Combine this expertise with innovative, leading-edge information technologies and you have a construction enterprise management system built from the ground up: **HxGN SMART Build**.

HxGN SMART Build enables up-to-the-minute tracking, managing and reporting of time, materials and other expenditures, including variances between budgeted and actual costs, providing visibility into project execution & performance through dashboards, model visualization and interactive spreadsheets, better control of costs and resources improves all facets of project performance to the benefit of construction executives and their shareholders.





TOTAL CLARITY REPLACES INFORMATION OVERLOAD

HxGN SMART Build gives executives a clear line-of-sight to the entire project, a firm grasp of all activities and changes, and provides complete control at every level. It seamlessly connects the construction executives with project managers and superintendents, and puts an easy-to-use browser-based platform and tailor-made tools into the hands of workers on their smart devices, granting them real-time access to all changes, detailed instructions, advanced technologies.

- Facilitates tasks, and the ability to report deviations and submit completion updates.
- Improves accuracy and communication between the field and the office, connecting silos of information.
- Enables easy access to plans and model data without complicated and expensive software or plugins.

HxGN SMART Build organises data and information on a single platform that participants at all levels of the construction project can access any time, from anywhere. CAD drawings, 3D models, specifications, schedules, materials, workflows and more are consolidated into a secure, cloud-based information management solution.

- Accurate model data in the field reduces project risks and avoids errors.
- Access to office data in the field compresses schedules.



CONNECTIVITY: INTELLIGENCE AT WORK

With **HxGN SMART Build**, thousands of independent yet interrelated people, data, and tasks are dynamically connected and available to view, measure, analyse and execute within a single interface. The ability to seamlessly integrate models with robotic total stations and to continuously capture real-time job site data ensures that people and machines understand and optimize the plan.

A true end-to-end solution—from planning and execution through hand-over to the building owner—**HxGN SMART Build** improves communication, collaboration, and the flow of information between people, processes, and machines.

HxGN SMART Build dynamically captures and aggregates all changes throughout the life-cycle of the construction project to deliver as-built plans upon completion of construction, greatly reducing planning time and costs for any future renovation or retrofitting work.



SIMPLICITY: THE ULTIMATE SOPHISTICATION

Organisation makes a system of many tasks appear fewer. **HxGN SMART Build** is the ultimate construction solution, transforming the complexity of a construction project into a simple and robust platform. It runs on existing devices that can be managed without the overhead of dedicated IT staff. Instead, it is efficiently administered and controlled with permission and role-based access.

- Simplifies creation and management of pre-construction estimating and scheduling, within any complex project environment, including BIM-compliant projects.
- The convergence of planning and execution occurs seamlessly.
- Simply feed construction models and layout points to robotic total stations to quickly and accurately locate building elements.
- Gain greater control of schedule and work execution. HxGN SMART Build introduces work packages to the construction industry and delivers up-to-date direction on tasks and priorities, including communication of planning, instruction, and changes, increase efficiency and reducing errors and costly rework.



ENGAGE WITH US ON SOCIAL MEDIA



hxgnsmartbuild.com