



SKID Manufacturers

Oil & Gas

Sewage Treatment

Services Offered

- ◆ Pipe Stress Analysis
- ◆ 3D Plant Modeling, Plant Layout & ISO Creation
- ◆ Hydraulic Calculation & Surge Analysis
- ◆ Pressure Vessel, Storage Tank Design & Analysis
- ◆ Pipe Support and Structural Design & Analysis

Fire Protection

District Cooling

www.image-grafix.com

IMPLEMENT Best Practices to **IMPROVE** Services at **REDUCED** Cost

ImageGrafix Software FZCO's Engineering Services Division is a specialized engineering services provider in the plant design industry catering to certain key and challenging engineering services. It provides world class services to our clients across the globe with its highly professional teams by following best industry practices and adhering to international Society Codes such as ASME/API/BS/IS for Design/Analysis verification and validation. ImageGrafix provides these Plant Engineering services worldwide from its delivery centre in Chennai, India.

Why ImageGrafix

The success probability of an engineering company largely depends on its ability to change itself to meet the ever changing market requirements. The most important aspect in a project environment will be the quality of work and strict delivery schedules. ImageGrafix understands your project requirements and can assist you in meeting your project deadlines through its engineering services division.

Major organizations increasingly turn to outsourcing to cope with increased demands on staff and expanding services. By outsourcing to ImageGrafix, you can

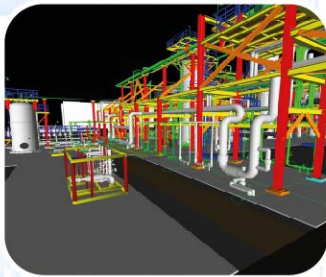
- **Benefit from technological skills and expertise to increase efficiency**
- **Reduce costs by lowering processing time and expense, eliminating capital investment**
- **Improve the way your organization deals with the peaks and valleys of project requirements**
- **Enhance your focus on core engineering activities**

IMPLEMENT Best Practices to IMPROVE Services at REDUCED Cost

Pipe Stress Analysis

ImageGrafix has core specialization in Pipe Stress Analysis and it's done more than 100+ Projects by using CAESAR II Software for its Middle East and Indian Customers. Some of our Key Projects are

- Al Sowah Island
- Dubai Metro (Both Green & Red Line)
- Muscat International Airport
- Al Wathba Sewage Treatment Plant
- Al Erkyah, Lusail City
- Sabkha 63 Well and Shayah Ngl Plant



3D Plant Design Modeling

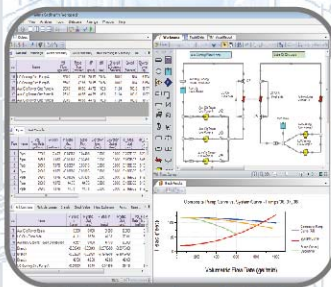
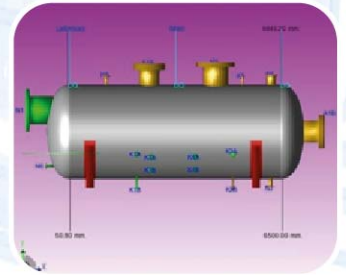
ImageGrafix Plant Design team is capable of performing 3D Plant Modeling Using CADWorx Software and extract the Plant Layout, Isometrics and BOM to meet the customer's project needs. Some of our Key Projects are

- Isomate Quality Improvement, Takreer
- Das Island Water Treatment Plant
- GTG Based Co-Gen Cycle Plant
- Barzan Offshore Plant
- Tank form area, Universal terminal

Static Equipment Design & Analysis

ImageGrafix Mechanical team is capable of performing Design and Analysis of Static Equipment such as Pressure Vessel, Heat Exchanger and Storage Tank using PVELite Software. Some of our Key Projects are

- Full Field Gas Compression Project
- Yaslik Paper Project
- Buffer Tank Analysis
- Barzan Offshore Plant
- Tank form area, Universal terminal



Hydraulic & Surge Analysis

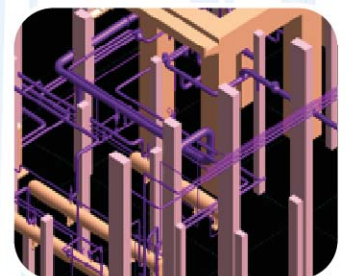
ImageGrafix has a team of specialized external consultants to perform the Hydraulic steady state Calculation, Line adequacy study, Pipe Sizing and Surge Analysis using PIPENET/AFT Software. Some of our Key Projects are

- Water Injection System, ZADCO
- Fire Water System, MOQ
- Bass Drill Project, Lamprell
- Fire Water System, ADMA
- Fire water System, ADGGAS
- Tanker Loading System, Takreer

Structural Analysis

ImageGrafix Civil & Structural team is capable of performing Structural Analysis for Pipe Support, Pipe Rack, SKID Base frame etc using Staad.Pro Software. Some of our Key Projects are

- Full Field Gas Compression Project
- CMA Tower Project
- Muscat International Airport
- Gas Engine Based Power Plant
- Al Wathba Sewage Treatment Plant



ImageGrafix

ImageGrafix Software FZCO